

# PCBN

# Insert

## SNGN

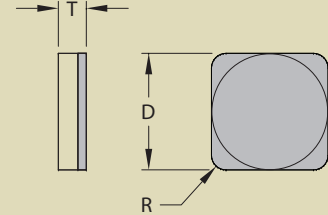
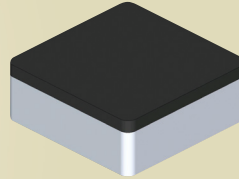


### Stocked Sizes:\*

- 1 = 1 Edge
- 2 = 2 Edges
- 3 = 3 Edges
- 4 = 4 Edges
- 6 = 6 Edges
- FT = Full Top PCBN
- S = Solid PCBN

### Blank Sizes:

- X = 0.020 Depth of Cut
- Z = 0.100 Depth of Cut



BLANK SIZE	Type		PCBN (Grades)								Dimensions (Inches)			
	ANSI	ISO	SC	SCI	SI	HC1	HC2	HC3	S		D	T	R	H
	SNGN321	SNGN090404									0.375	0.125	0.016	-
	SNGN322	SNGN090408					FT		S		0.375	0.125	0.031	-
	SNGN323	SNGN090412									0.375	0.125	0.047	-
	SNGN431	SNGN120404									0.500	0.188	0.016	-
	SNGN432	SNGN120408					FT		S		0.500	0.188	0.031	-
	SNGN433	SNGN120412									0.500	0.188	0.047	-
	SNGN434	SNGN120416									0.500	0.188	0.063	-

\* If Blank = Non-Stocked. Will produce to order.