

CERMET

Turning Insert

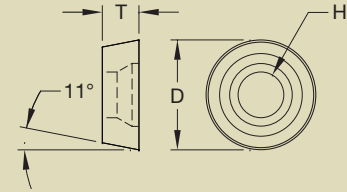
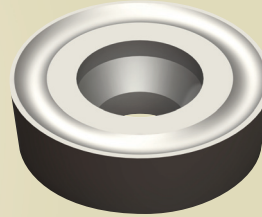
RPMT

Stocked Sizes:*

- 1 = 1 Edge
- 2 = 2 Edges
- 3 = 3 Edges
- 4 = 4 Edges
- 6 = 6 Edges

Blank Sizes:

- X = 0.050 Depth of Cut
- Z = 0.100 Depth of Cut



Type		Cermet Uncoated (Grades)				Cermet PVD Coated (Grades)				Dimensions (Inch)		
ANSI	ISO	CM340	CM360	CM380	CM400	CM440P	CM460P	CM480P	CM500P	D	T	H
RPMT0802										0.3750	0.094	0.134
RPMT1203										0.5000	0.125	0.173
RPMT1604										0.6250	0.188	0.217
RPMT2004										0.7500	0.188	0.217

* If Blank = Non-Stocked. Will produce to order.